

NDUFS3 Antibody (C-term)
Purified Rabbit Polyclonal Antibody (Pab)
Catalog # AP20739c**Specification**

NDUFS3 Antibody (C-term) - Product Information

Application	WB,E
Primary Accession	O75489
Reactivity	Human, Mouse
Host	Rabbit
Clonality	Polyclonal
Isotype	Rabbit IgG
Calculated MW	30242

NDUFS3 Antibody (C-term) - Additional Information**Gene ID** 4722**Other Names**

NADH dehydrogenase [ubiquinone] iron-sulfur protein 3, mitochondrial, Complex I-30kD, CI-30kD, NADH-ubiquinone oxidoreductase 30 kDa subunit, NDUFS3

Target/Specificity

This NDUFS3 antibody is generated from a rabbit immunized with a KLH conjugated synthetic peptide between 251-284 amino acids from the C-terminal region of human NDUFS3.

Dilution

WB~~1:1000

E~~Use at an assay dependent concentration.

Format

Purified polyclonal antibody supplied in PBS with 0.09% (W/V) sodium azide. This antibody is purified through a protein A column, followed by peptide affinity purification.

Storage

Maintain refrigerated at 2-8°C for up to 2 weeks. For long term storage store at -20°C in small aliquots to prevent freeze-thaw cycles.

Precautions

NDUFS3 Antibody (C-term) is for research use only and not for use in diagnostic or therapeutic procedures.

NDUFS3 Antibody (C-term) - Protein Information**Name** NDUFS3

Function Core subunit of the mitochondrial membrane respiratory chain NADH dehydrogenase (Complex I) which catalyzes electron transfer from NADH through the respiratory chain, using

ubiquinone as an electron acceptor (PubMed:[14729820](#), PubMed:[30140060](#)). Essential for the catalytic activity and assembly of complex I (PubMed:[14729820](#), PubMed:[24028823](#), PubMed:[30140060](#)).

Cellular Location

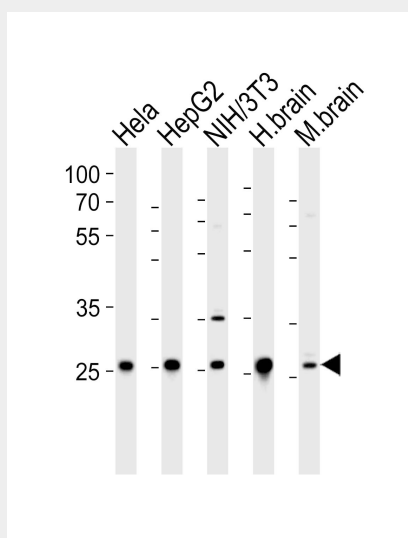
Mitochondrion inner membrane; Peripheral membrane protein; Matrix side

NDUFS3 Antibody (C-term) - Protocols

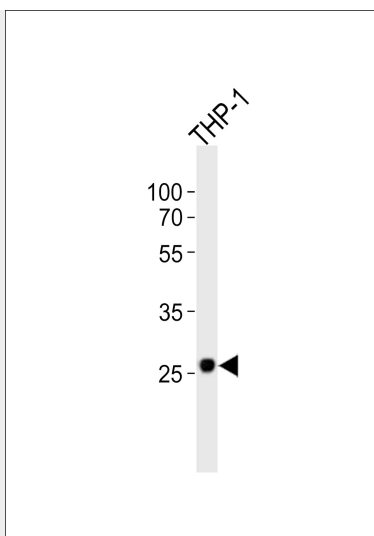
Provided below are standard protocols that you may find useful for product applications.

- [Western Blot](#)
- [Blocking Peptides](#)
- [Dot Blot](#)
- [Immunohistochemistry](#)
- [Immunofluorescence](#)
- [Immunoprecipitation](#)
- [Flow Cytometry](#)
- [Cell Culture](#)

NDUFS3 Antibody (C-term) - Images



Western blot analysis of lysates from HeLa, HepG2, mouse NIH/3T3 cell line, human brain and mouse brain tissue lysate (from left to right), using NDUFS3 Antibody (C-term) (Cat. #AP20739c). AP20739c was diluted at 1:1000 at each lane. A goat anti-rabbit IgG H&L (HRP) at 1:5000 dilution was used as the secondary antibody. Lysates at 35 µg per lane.



Western blot analysis of lysate from THP-1 cell line, using NDUFS3 Antibody (C-term)(Cat. #AP20739c). AP20739c was diluted at 1:1000. A goat anti-rabbit IgG H&L(HRP) at 1:10000 dilution was used as the secondary antibody. Lysate at 20ug.

NDUFS3 Antibody (C-term) - Background

Core subunit of the mitochondrial membrane respiratory chain NADH dehydrogenase (Complex I) that is believed to belong to the minimal assembly required for catalysis. Complex I functions in the transfer of electrons from NADH to the respiratory chain. The immediate electron acceptor for the enzyme is believed to be ubiquinone (By similarity).

NDUFS3 Antibody (C-term) - References

Loeffen J.,et al.Biochem. Biophys. Res. Commun. 247:751-758(1998).
Procaccio V.,et al.Mamm. Genome 11:808-810(2000).
Hu R.-M.,et al.Proc. Natl. Acad. Sci. U.S.A. 97:9543-9548(2000).
Ota T.,et al.Nat. Genet. 36:40-45(2004).
Mural R.J.,et al.Submitted (SEP-2005) to the EMBL/GenBank/DDBJ databases.